

Green

$\text{♩} = 150$ B F# E 2 B B F#

When wint-er's gray is on the sky, rust u-pon the
 Wav-ing de - fiant— pine tree boughs, ce - dar need - les,
 Death may raise its voice to - day; O, but Life will
 So keep it in your wint - er store, hang its gar - land

4 C#sus C# F# F# B B 2

leaves that lie, red on— the last few ber - ries cling - ing,
 stub-born and proud, hi - ding in - side the seeds of sum - mer,
 have its say, speak - ing in lov - ers and in child - ren,
 'round the door, grant to your heart its hope - ful pro - mise,

7 G#m F# G#m F# 2 F#

brown on the branch where the bit - ter wind's sing - ing— E - ven when
 deep in the root where it sleeps un - der cov - er— Pat - ient - ly
 in po - ets' pens and phil - o - so-phers' vi - sions. Life is a
 fash-ion a wreath for its blessing u - pon us. Wint-er brings

10 B F# B Bsus B Bsus

white ob - scures the scene,
 wait - ing there un - seen,
 plan - et's dar - ing dream:
 browns and grays in - deed; but

13 B C#m F# B Bsus B

still, in wint - er, there is green.
 in the wint - er, there is green.
 Earth's de - vo - tion, spoken in green.
 when it comes, re - mem - ber green.

Arrangement Permissions

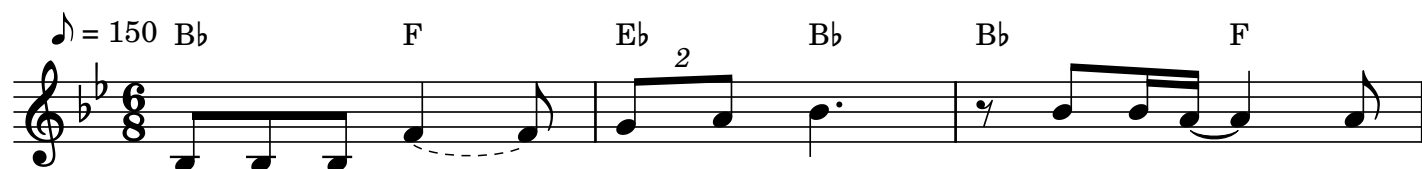
One-time Adaptation

New Arrangement OK

Seek permission to arrange

Look at the Sing Out Love "Permissions" section for further explanation

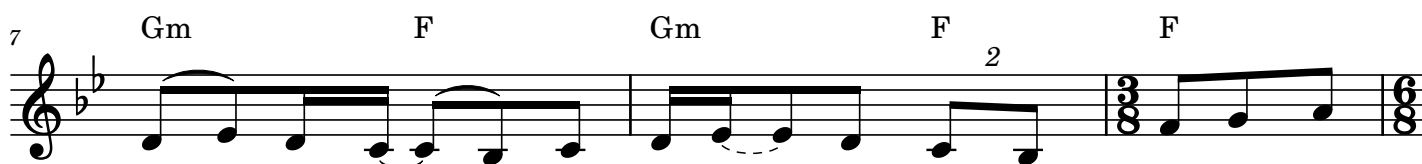
Green



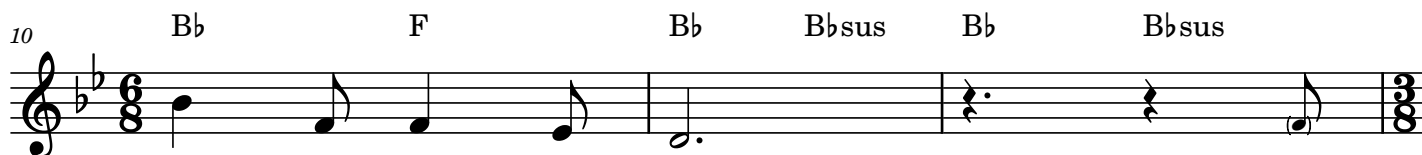
When wint - er's gray is on the sky, rust u-pon the
 Wav - ing de - fian - pine tree boughs, ce - dar need - les,
 Death may raise its voice to - day; O, but Life will
 So keep it in your wint - er store, hang its gar - land



leaves that lie, red on the last few ber - ries cling - ing,
 stub-born and proud, hi - ding in - side the seeds of sum - mer,
 have its say, speak - ing in lov - ers and in child - ren,
 'round the door, grant to your heart its hope - ful pro - mise,



brown on the branch where the bit - ter wind's sing - ing— E - ven when
 deep in the root where it sleeps un - der cov - er— Pat - ient - ly
 in po - ets' pens and phil - o - so - phers' vi - sions. Life is a
 fash - ion a wreath for its bless - ing u - pon us. Wint - er brings



white ob - scures the scene,
 wait - ing there un - seen,
 plan - et's dar - ing dream:
 browns and grays in - deed; but



still, in wint - er, there is green.
 in the wint - er, there is green.
 Earth's de - vo - tion, spoken in green.
 when it comes, re - mem - ber green.

Arrangement Permissions

👉 One-time Adaptation

👍 New Arrangement OK

🚫 Seek permission to arrange

Look at the Sing Out Love "Permissions" section for further explanation

Green

♩ = 150 A E D A A E

When wint - er's gray is on the sky, rust u - pon the
 Wav - ing de - fian - pine tree boughs, ce - dar need - les,
 Death may raise its voice to - day; O, but Life will
 So keep it in your wint - er store, hang its gar - land

4 Bsus B E E A A

leaves that lie, red on the last few ber - ries cling - ing,
 stub - born and proud, hi - ding in - side the seeds of sum - mer,
 have its say, speak - ing in lov - ers and in child - ren,
 'round the door, grant to your heart its hope - ful pro - mise,

7 F#m E F#m E E

brown on the branch where the bit - ter wind's sing - ing— E - ven when
 deep in the root where it sleeps un - der cov - er— Pat - ient - ly
 in po - ets' pens and phil - o - so - phers' vi - sions. Life is a
 fash - ion a wreath for its bless - ing u - pon us. Wint - er brings

10 A E A Asus A Asus

white ob - scures the scene,
 wait - ing there un - seen,
 plan - et's dar - ing dream:
 browns and grays in - deed; but

13 A Bm E A Asus A

still, in wint - er, there is green.
 in the wint - er, there is green.
 Earth's de - vo - tion, spoken in green.
 when it comes, re - mem - ber green.

Arrangement Permissions

One-time Adaptation

New Arrangement OK

Seek permission to arrange

Look at the Sing Out Love "Permissions" section for further explanation

Green

♩ = 150 Ab Eb Db 2 Ab Ab Eb

When wint-er's gray is on the sky, rust u-pon the
 Wav-ing de-fiant— pine tree boughs, ce-dar need-les,
 Death may raise its voice to-day; O, but Life will
 So keep it in your wint-er store, hang its gar-land

4 Bbsus Bb Eb Eb Ab Ab 2

leaves that lie, red on the last few ber-ries cling-ing,
 stub-born and proud, hi-ding in-side the seeds of sum-mer,
 have its say, speak-ing in lov-ers and in child-ren,
 'round the door, grant to your heart its hope-ful pro-mise,

7 Fm Eb Fm Eb 2 Eb

brown on the branch where the bit-ter wind's sing-ing— E-ven when
 deep in the root where it sleeps un-der cov-er— Pat-ient-ly
 in po-ets' pens and phil-o-so-phers' vi-sions. Life is a
 fash-ion a wreath for its bless-ing u-pon us. Wint-er brings

10 Ab Eb Ab Absus Ab Absus

white ob-scures the scene,
 wait-ing there un-seen,
 plan-et's dar-ing dream:
 browns and grays in-deed; but

13 Ab Bbm Eb Ab Absus Ab

still, in wint-er, there is green.
 in the wint-er, there is green.
 Earth's de-vo-tion, spoken in green.
 when it comes, re-mem-ber green.

Arrangement Permissions

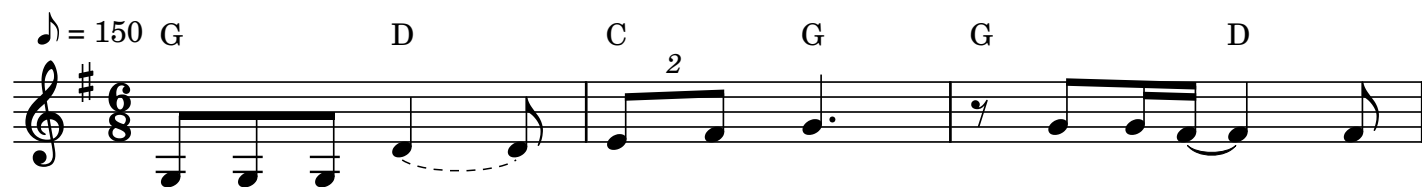
One-time Adaptation

New Arrangement OK

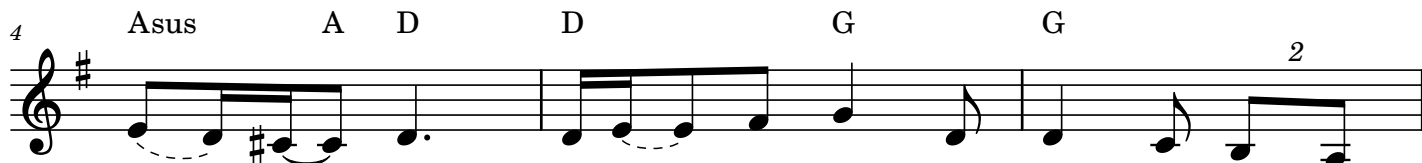
Seek permission to arrange

Look at the Sing Out Love "Permissions" section for further explanation

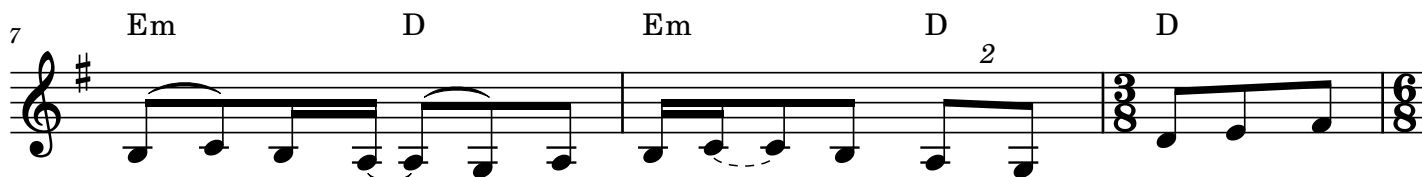
Green



When wint - er's gray is on the sky, rust u-pon the
 Wav - ing de - fian - pine tree boughs, ce - dar need - les,
 Death may raise its voice to - day; O, but Life will
 So keep it in your wint - er store, hang its gar - land



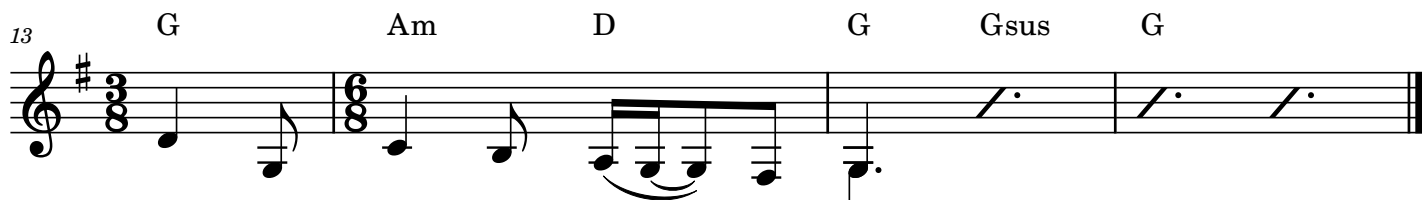
leaves that lie, red on the last few ber - ries cling - ing,
 stub-born and proud, hi - ding in - side the seeds of sum - mer,
 have its say, speak - ing in lov - ers and in child - ren,
 'round the door, grant to your heart its hope - ful pro - mise,



brown on the branch where the bit - ter wind's sing - ing— E - ven when
 deep in the root where it sleeps un - der cov - er— Pat - ient - ly
 in po - ets' pens and phil - o - so - phers' vi - sions. Life is a
 fash - ion a wreath for its bless - ing u - pon us. Wint - er brings



white ob - scures the scene,
 wait - ing there un - seen,
 plan - et's dar - ing dream:
 browns and grays in - deed; but



still, in wint - er, there is green.
 in the wint - er, there is green.
 Earth's de - vo - tion, spoken in green.
 when it comes, re - mem - ber green.

Arrangement Permissions

One-time Adaptation

New Arrangement OK

Seek permission to arrange

Look at the Sing Out Love "Permissions" section for further explanation

Green

♩ = 150 G♭ D♭ C♭² G♭ G♭ D♭

When wint-er's gray is on the sky, rust u-pon the
 Wav-ing de - fian- pine tree boughs, ce - dar need - les,
 Death may raise its voice to - day; O, but Life will
 So keep it in your wint - er store, hang its gar - land

4 A♭sus A♭ D♭ D♭ G♭ G♭²

leaves that lie, red on the last few ber - ries cling - ing,
 stub-born and proud, hi - ding in - side the seeds of sum - mer,
 have its say, speak - ing in lov - ers and in child - ren,
 'round the door, grant to your heart its hope - ful pro - mise,

7 E♭m D♭ E♭m D♭² D♭

brown on the branch where the bit - ter wind's sing - ing— E - ven when
 deep in the root where it sleeps un - der cov - er— Pat - ient - ly
 in po - ets' pens and phil - o - so - phers' vi - sions. Life is a
 fash - ion a wreath for its bless - ing u - pon us. Wint - er brings

10 G♭ D♭ G♭ G♭sus G♭ G♭sus

white ob - scures the scene,
 wait - ing there un - seen,
 plan - et's dar - ing dream:
 browns and grays in - deed; but

Arrangement Permissions

👉 One-time Adaptation

👍 New Arrangement OK

🚫 Seek permission to arrange

Look at the Sing Out Love "Permissions" section for further explanation

Green - 2

13

G \flat A \flat m D \flat G \flat G \flat sus G \flat

still, in wint - er, there is green.
 in the wint - er, there is green.
 Earth's de - vo - tion, spoken in green.
 when it comes, re - mem - ber green.

Green

♩ = 150 F# C# B F# F# C#

When wint-er's gray is on ² the sky, rust u-pon the
 Wav-ing de - fianc pine tree boughs, ce - dar need - les,
 Death may raise its voice to - day; O, but Life will
 So keep it in your wint - er store, hang its gar - land

4 G#sus G# C# C# F# F# ²

leaves that lie, red on the last few ber - ries cling - ing,
 stub-born and proud, hi - ding in - side the seeds of sum - mer,
 have its say, speak - ing in lov - ers and in child - ren,
 'round the door, grant to your heart its hope - ful pro - mise,

7 D#m C# D#m C# ² C#

brown on the branch where the bit - ter wind's sing - ing— E - ven when
 deep in the root where it sleeps un - der cov - er— Pat - ient - ly
 in po - ets' pens and phil - o - so - phers' vi - sions. Life is a
 fash - ion a wreath for its bless - ing u - pon us. Wint - er brings

10 F# C# F# F#sus F# F#sus

white ob - scures the scene,
 wait - ing there un - seen,
 plan - et's dar - ing dream:
 browns and grays in - deed; but

13 F# G#m C# F# F#sus F#

still, in wint - er, there is green.
 in the wint - er, there is green.
 Earth's de - vo - tion, spoken in green.
 when it comes, re - mem - ber green.

Arrangement Permissions

One-time Adaptation

New Arrangement OK

Seek permission to arrange

Look at the Sing Out Love "Permissions" section for further explanation

Green

♩ = 150 F C B \flat F F C

When wint - er's gray is on ² the sky, rust u - pon the
 Wav - ing de - fian — pine tree boughs, ce - dar need - les,
 Death may raise its voice to - day; O, but Life will
 So keep it in your wint - er store, hang its gar - land

4 G^{sus} G C C F F ²

leaves that lie, red on — the last few ber - ries cling - ing,
 stub - born and proud, hi - ding in - side the seeds of sum - mer,
 have its say, speak - ing in lov - ers and in child - ren,
 'round the door, grant to your heart its hope - ful pro - mise,

7 D m C D m C ² C

brown on the branch where the bit - ter wind's sing - ing — E - ven when
 deep in the root where it sleeps un - der cov - er — Pat - ient - ly
 in po - ets' pens and phil - o - so - phers' vi - sions. Life is a
 fash - ion a wreath for its bless - ing u - pon us. Wint - er brings


10 F C F F^{sus} F F^{sus}


white ob - scures the scene,
 wait - ing there un - seen,
 plan - et's dar - ing dream:
 browns and grays in - deed; but

13 F G m C F F^{sus} F


still, in wint - er, there is green.
 in the wint - er, there is green.
 Earth's de - vo - tion, spoken in green.
 when it comes, re - mem - ber green.

Arrangement Permissions

 One-time Adaptation

 New Arrangement OK

 ~~Seek permission to arrange~~

Look at the Sing Out Love "Permissions" section for further explanation 

Green

♩ = 150 E B A E E B

When wint - er's gray is on ² the sky, rust u - pon the
 Wav - ing de - fian - pine tree boughs, ce - dar need - les,
 Death may raise its voice to - day; O, but Life will
 So keep it in your wint - er store, hang its gar - land

4 F#sus F# B B E E ²

leaves that lie, red on the last few ber - ries cling - ing,
 stub - born and proud, hi - ding in - side the seeds of sum - mer,
 have its say, speak - ing in lov - ers and in child - ren,
 'round the door, grant to your heart its hope - ful pro - mise,

7 C#m B C#m B ² B

brown on the branch where the bit - ter wind's sing - ing— E - ven when
 deep in the root where it sleeps un - der cov - er— Pat - ient - ly
 in po - ets' pens and phil - o - so - phers' vi - sions. Life is a
 fash - ion a wreath for its blessing u - pon us. Wint - er brings

10 E B E Esus E Esus

white ob - scures the scene,
 wait - ing there un - seen,
 plan - et's dar - ing dream:
 browns and grays in - deed; but

13 E F#m B E Esus E

still, in wint - er, there is green.
 in the wint - er, there is green.
 Earth's de - vo - tion, spoken in green.
 when it comes, re - mem - ber green.

Arrangement Permissions

👉 One-time Adaptation

👍 New Arrangement OK

🚫 Seek permission to arrange

Look at the Sing Out Love "Permissions" section for further explanation

Green

♩ = 150 Eb Bb Ab Eb Eb Bb

When wint-er's gray is on ² the sky, rust u-pon the
 Wav-ing de-fiant pine tree boughs, ce-dar need-les,
 Death may raise its voice to-day; O, but Life will
 So keep it in your wint-er store, hang its gar-land

4 F^{sus} F Bb Bb Eb Eb ²

leaves that lie, red on the last few ber-ries cling-ing,
 stub-born and proud, hi-ding in-side the seeds of sum-mer,
 have its say, speak-ing in lov-ers and in child-ren,
 'round the door, grant to your heart its hope-ful pro-mise,

7 Cm Bb Cm Bb ² Bb

brown on the branch where the bit-ter wind's sing-ing— E-ven when
 deep in the root where it sleeps un-der cov-er— Pat-ient-ly
 in po-ets' pens and phil-o-so-phers' vi-sions. Life is a
 fash-ion a wreath for its bless-ing u-pon us. Wint-er brings

10 Eb Bb Eb Eb^{sus} Eb Eb^{sus}

white ob-scures the scene,
 wait-ing there un-seen,
 plan-et's dar-ing dream:
 browns and grays in-deed; but

13 Eb Fm Bb Eb Eb^{sus} Eb

still, in wint-er, there is green.
 in the wint-er, there is green.
 Earth's de-vo-tion, spoken in green.
 when it comes, re-mem-ber green.

Arrangement Permissions

👉 One-time Adaptation

👍 New Arrangement OK

🚫 Seek permission to arrange

Look at the Sing Out Love "Permissions" section for further explanation

Green

♩ = 150 D A G D D A

When wint - er's gray is on ² the sky, rust u - pon the
 Wav - ing de - fian — pine tree boughs, ce - dar need - les,
 Death may raise its voice to - day; O, but Life will
 So keep it in your wint - er store, hang its gar - land

4 Esus E A A D D ²

leaves that lie, red on — the last few ber - ries cling - ing,
 stub - born and proud, hi - ding in - side the seeds of sum - mer,
 have its say, speak - ing in lov - ers and in child - ren,
 'round the door, grant to your heart its hope - ful pro - mise,

7 Bm A Bm A ² A

brown on the branch where the bit - ter wind's sing - ing — E - ven when
 deep in the root where it sleeps un - der cov - er — Pat - ient - ly
 in po - ets' pens and phil - o - so - phers' vi - sions. Life is a
 fash - ion a wreath for its bless - ing u - pon us. Wint - er brings

10 D A D Dsus D Dsus

white ob - scures the scene,
 wait - ing there un - seen,
 plan - et's dar - ing dream:
 browns and grays in - deed; but

13 D Em A D Dsus D

still, in wint - er, there is green.
 in the wint - er, there is green.
 Earth's de - vo - tion, spoken in green.
 when it comes, re - mem - ber green.

Arrangement Permissions

👉 One-time Adaptation

👍 New Arrangement OK

🚫 Seek permission to arrange

Look at the Sing Out Love "Permissions" section for further explanation

Green

♩ = 150 Db Ab Gb Db Db Ab

When wint-er's gray is on ² the sky, rust u-pon the
 Wav-ing de - fianc—— pine tree boughs, ce - dar need - les,
 Death may raise its voice to - day; O, but Life will
 So keep it in your wint - er store, hang its gar - land

4 Eb sus Eb Ab Ab Db Db ²

leaves that lie, red on the last few ber - ries cling - ing,
 stub-born and proud, hi - ding in - side the seeds of sum - mer,
 have its say, speak - ing in lov - ers and in child - ren,
 'round the door, grant to your heart its hope - ful pro - mise,

7 Bbm Ab Bbm Ab ² Ab

brown on the branch where the bit - ter wind's sing - ing— E - ven when
 deep in the root where it sleeps un - der cov - er— Pat - ient - ly
 in po - ets' pens and phil - o - so - phers' vi - sions. Life is a
 fash - ion a wreath for its bless - ing u - pon us. Wint - er brings

10 Db Ab Db Db sus Db Db sus

white ob - scures the scene,
 wait - ing there un - seen,
 plan - et's dar - ing dream:
 browns and grays in - deed; but

13 Db Ebm Ab Db Db sus Db

still, in wint - er, there is green.
 in the wint - er, there is green.
 Earth's de - vo - tion, spoken in green.
 when it comes, re - mem - ber green.

Arrangement Permissions

👉 One-time Adaptation

👍 New Arrangement OK

🚫 Seek permission to arrange

Look at the Sing Out Love "Permissions" section for further explanation

Green

♩ = 150 C# G# F#₂ C# C# G#

When wint-er's gray is on the sky, rust u-pon the
 Wav-ing de - fian - pine tree boughs, ce - dar need - les,
 Death may raise its voice to - day; O, but Life will
 So keep it in your wint - er store, hang its gar - land

4 D#sus D# G# G# C# C# 2

leaves that lie, red on the last few ber - ries cling - ing,
 stub-born and proud, hi - ding in - side the seeds of sum - mer,
 have its say, speak - ing in lov - ers and in child - ren,
 'round the door, grant to your heart its hope - ful pro - mise,

7 A#m G# A#m G# 2 G#

brown on the branch where the bit - ter wind's sing - ing— E - ven when
 deep in the root where it sleeps un - der cov - er— Pat-ient - ly
 in po-ets' pens and phil - o - so-phers' vi - sions. Life is a
 fash-ion a wreath for its bless-ing u - pon us. Wint-er brings

10 C# G# C# C#sus C# C#sus

white ob - scures the scene,
 wait - ing there un - seen,
 plan - et's dar - ing dream:
 browns and grays in - deed; but

13 C# D#m G# C# C#sus C#

still, in wint - er, there is green.
 in the wint - er, there is green.
 Earth's de - vo - tion, spoken in green.
 when it comes, re - mem - ber green.

Arrangement Permissions

👉 One-time Adaptation

👍 New Arrangement OK

🚫 ~~Seek permission to arrange~~

Look at the Sing Out Love "Permissions" section for further explanation

Green

♩ = 150 C

G F² C C G

When wint - er's gray is on the sky, rust u - pon the
 Wav - ing de - fian — pine tree boughs, ce - dar need - les,
 Death may raise its voice to - day; O, but Life will
 So keep it in your wint - er store, hang its gar - land

4 Dsus D G G C C

leaves that lie, red on — the last few ber - ries cling - ing,
 stub - born and proud, hi - ding in - side the seeds of sum - mer,
 have its say, speak - ing in lov - ers and in child - ren,
 'round the door, grant to your heart its hope - ful pro - mise,

7 Am G Am G² G

brown on the branch where the bit - ter wind's sing - ing — E - ven when
 deep in the root where it sleeps un - der cov - er — Pat - ient - ly
 in po - ets' pens and phil - o - so - phers' vi - sions. Life is a
 fash - ion a wreath for its bless - ing u - pon us. Wint - er brings

10 C G C Csus C Csus

white ob - scures the scene,
 wait - ing there un - seen,
 plan - et's dar - ing dream:
 browns and grays in - deed; but

13 C Dm G C Csus C

still, in wint - er, there is green.
 in the wint - er, there is green.
 Earth's de - vo - tion, spoken in green.
 when it comes, re - mem - ber green.

Arrangement Permissions

👉 One-time Adaptation

👍 New Arrangement OK

🚫 Seek permission to arrange

Look at the Sing Out Love "Permissions" section for further explanation

Green

♩ = 150 C_b G_b F_b² C_b C_b G_b

When wint-er's gray is on the sky, rust u-pon the
 Wav-ing de - fian - pine tree boughs, ce - dar need - les,
 Death may raise its voice to - day; O, but Life will
 So keep it in your wint - er store, hang its gar - land

4 D_bsus D_b G_b G_b C_b C_b 2

leaves that lie, red on the last few ber - ries cling - ing,
 stub-born and proud, hi - ding in - side the seeds of sum - mer,
 have its say, speak - ing in lov - ers and in child - ren,
 'round the door, grant to your heart its hope - ful pro - mise,

7 A_bm G_b A_bm G_b² G_b

brown on the branch where the bit - ter wind's sing - ing— E - ven when
 deep in the root where it sleeps un - der cov - er— Pat - ient - ly
 in po - ets' pens and phil - o - so - phers' vi - sions. Life is a
 fash - ion a wreath for its bless - ing u - pon us. Wint - er brings

10 C_b G_b C_b C_bsus C_b C_bsus

white ob - scures the scene,
 wait - ing there un - seen,
 plan - et's dar - ing dream:
 browns and grays in - deed; but

13 C_b D_bm G_b C_b C_bsus C_b

still, in wint - er, there is green.
 in the wint - er, there is green.
 Earth's de - vo - tion, spoken in green.
 when it comes, re - mem - ber green.

Arrangement Permissions

👉 One-time Adaptation

👍 New Arrangement OK

🚫 Seek permission to arrange

Look at the Sing Out Love "Permissions" section for further explanation